

Changing Control Groups on YRC1000

Introduction

A software change made during the DX200 generation controller disabled the ability for a programmer to change control groups of a job by simply selecting the job header and changing the control group. This is a common task when setting up Ferris-wheel type systems. This document will show you how to get around this on latter versions of DX200 and YRC1000 controllers.

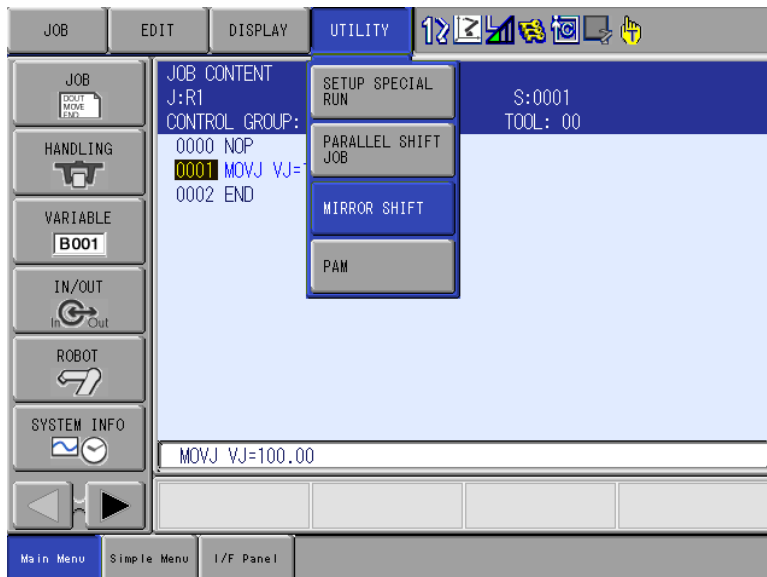
Mirror Shift

To change control groups of a job you will need to perform a mirror shift. The shifted axes are determined by parameter S1CxG065. Prior to executing the mirror shift you will need to set S1CxG065=0 to ensure your points will not actually be shifted.

This document captures ideas, experiences, and informal recommendations from the Yaskawa Partner Support team. It is meant to augment – not supersede manuals or documentation from motoman.com. Please contact the Partner Support team at partnersupport@motoman.com for updates or clarification.

STEP 1:

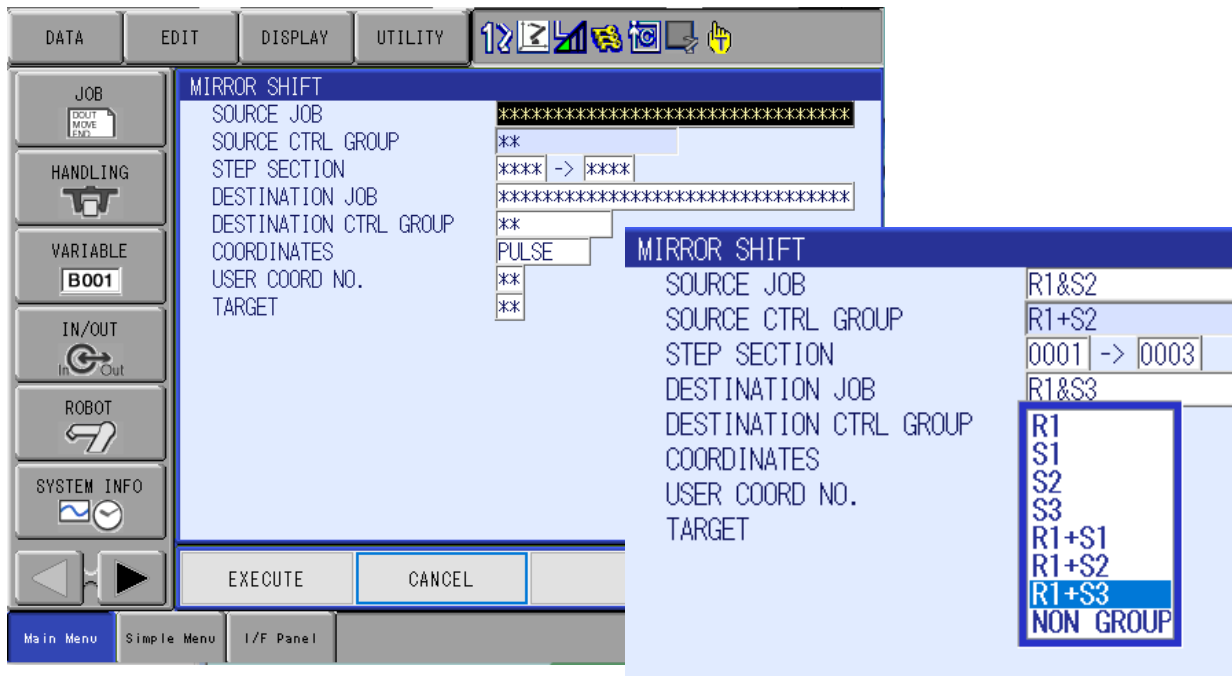
- Open the job you want to change control groups with
- select [UTILITY]
- select [MIRROR SHIFT]



This document captures ideas, experiences, and informal recommendations from the Yaskawa Partner Support team. It is meant to augment – not supersede manuals or documentation from motoman.com. Please contact the Partner Support team at partnersupport@motoman.com for updates or clarification.

Step 2:

- Select the source job you want to have control groups changed on
- Step Section will default to capture all steps. Change if desired.
- Create a new name for the Destination Job (executed mirror shift job)
- Choose the desired Control Group for the executed mirror shift job.
- Select Execute



Tips

Mirror Shift is not possible on Relative Jobs. Inside the job select [Utility] tab, then select [Relative Job] from the drop down to convert job back to standard format, then perform mirror shift. Alternatively set S2C0376=0 prior to creating your job. S2C0376=0 (standard) =1(relative) when relative job software is enabled.